



RDG260KN  
RDG264KN

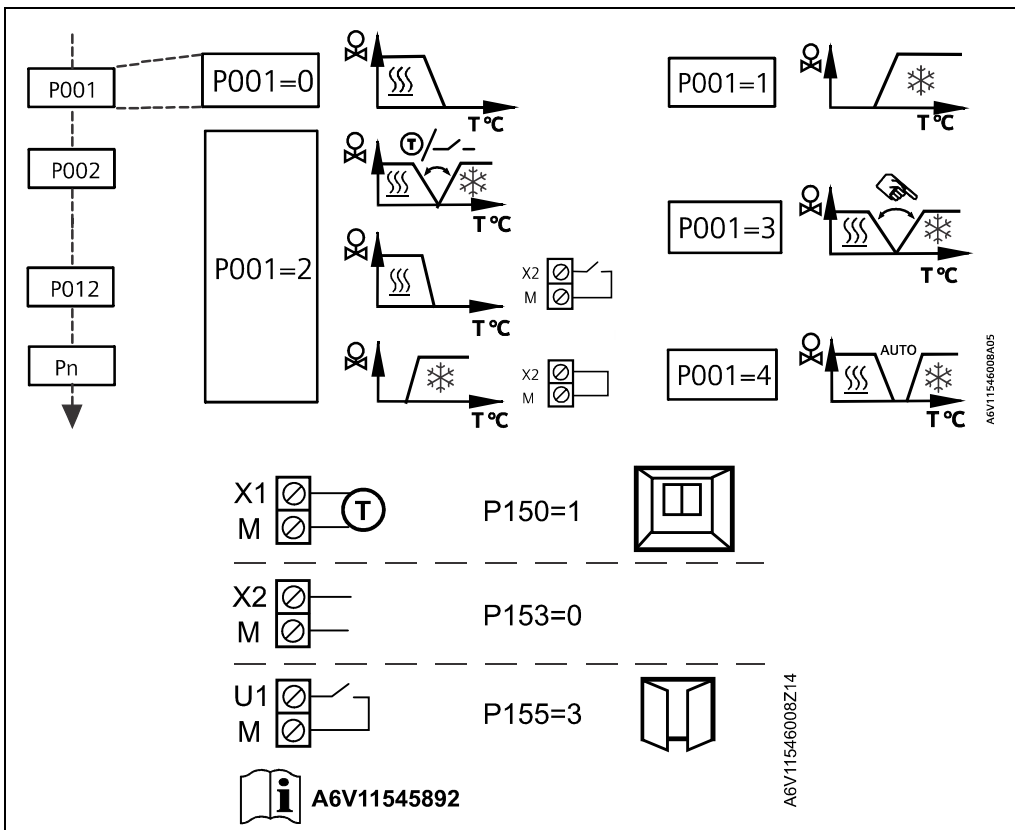
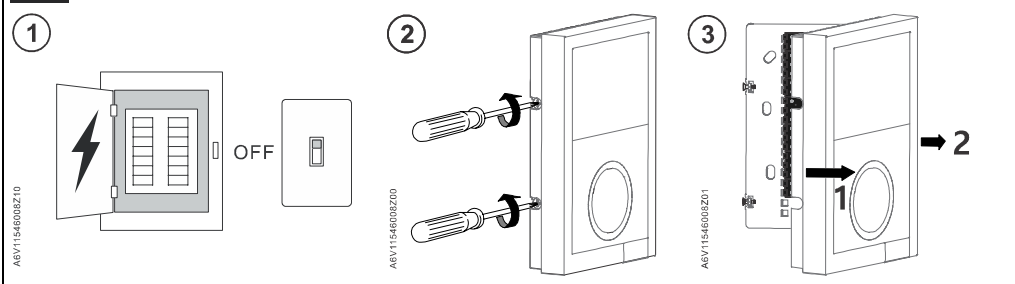
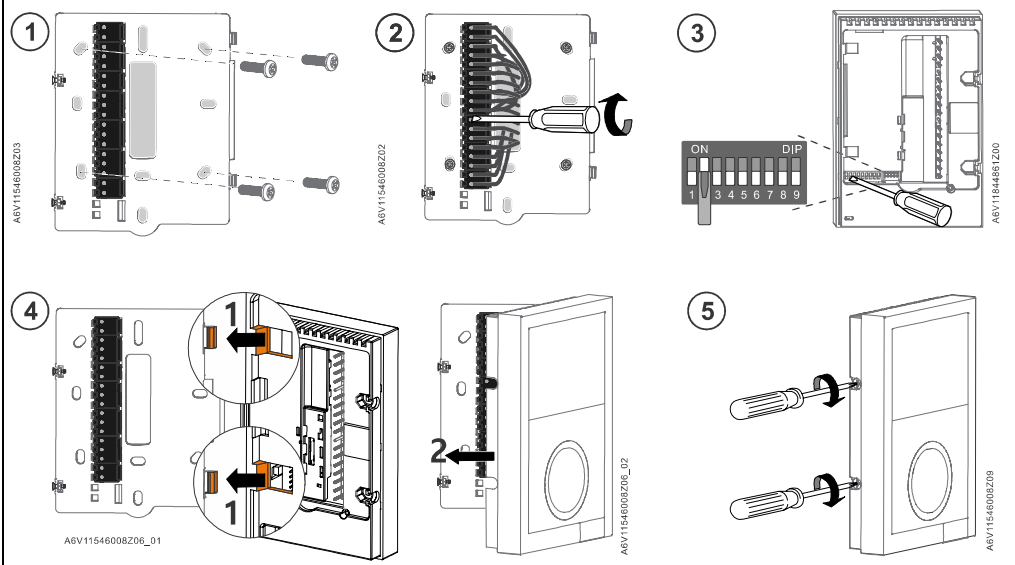



User manual, documentation  
and parameters  
[sid.siemens.com/home](http://sid.siemens.com/home)

en Mounting instructions  
fr Instructions de montage

de Montageanleitung  
it Istruzioni di montaggio

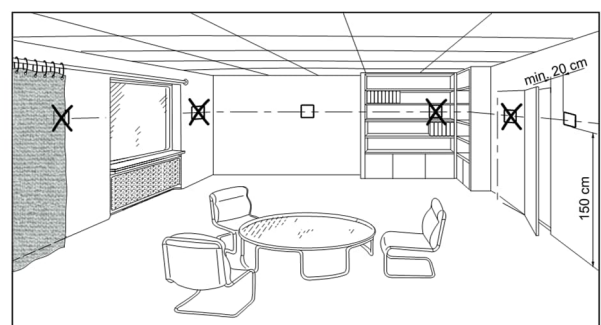
es	Instrucciones de montaje
tr	Montaj talimatlari



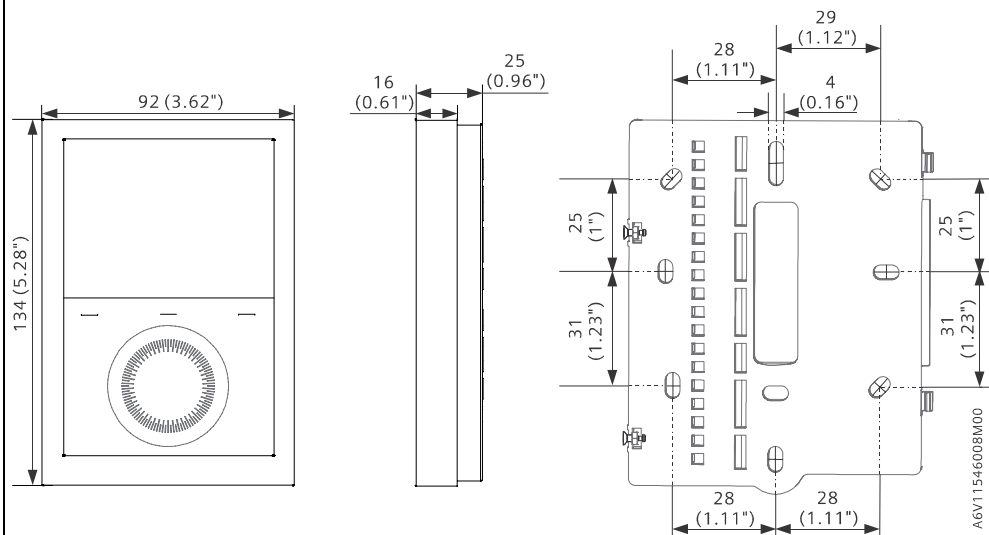
- Documents
- Parameters P001...Pn
- Humidity (r.h.)
-  IAQ (RDG264KN)
- KNX S-mode
- ...

[www.siemens.com/HIT](http://www.siemens.com/HIT)

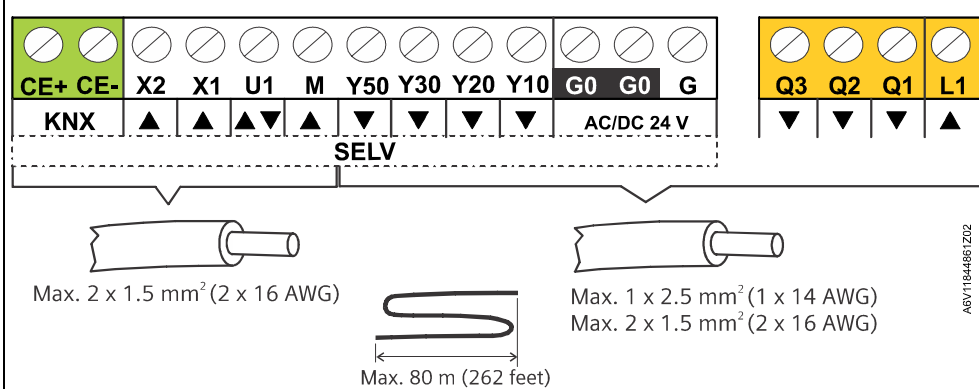
PCT Go



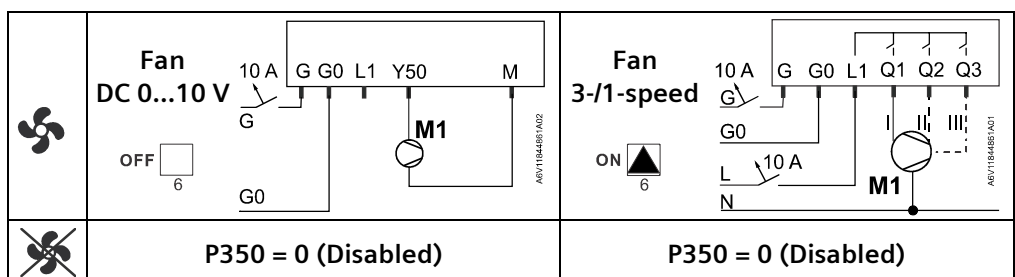
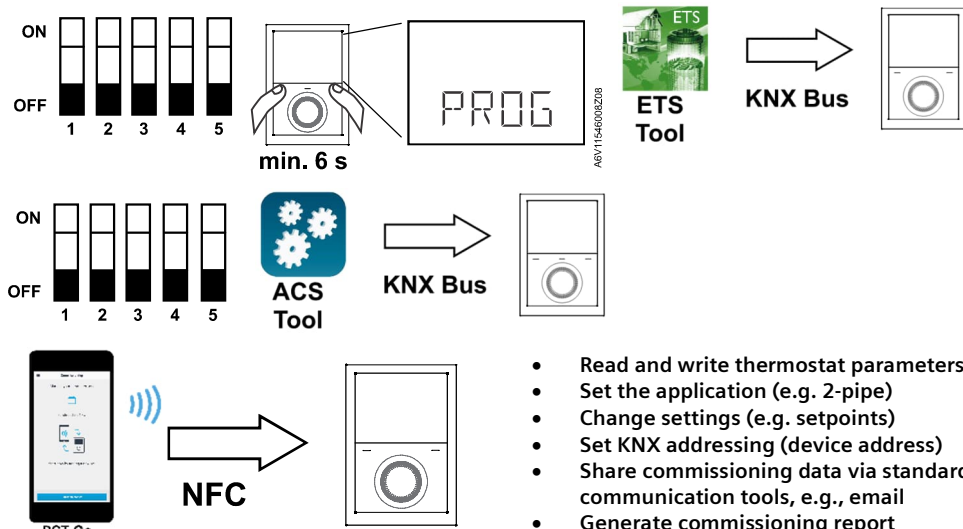
en	Not on metallic surfaces
de	Nicht auf metallischen Oberflächen
es	No en superficies metálicas
fr	Pas sur surfaces métalliques
it	No su superfici metalliche
tr	Metalik yüzeylerde değil



mm (inch)



## KNX programming mode and commissioning



AC/DC 24 V } 10 A

AC 230 V or AC/DC 24 V } 10 A

⚠ L1 – Q1 – Q2 – Q3

230 V on L1 ⇒ 230 V on Q1, Q2, Q3

24 V on L1 ⇒ 24 V on Q1, Q2, Q3

ON

OFF

1

2

3

4

5

6

7

8

DIP's:

ON =

OFF =

DIP No.: 1...8

DIP No.: 1...8

Application	V1	Outputs	
		DC	On/Off
① 2-pipe 		 DC 3-speed	 On/Off 3-speed

Application	V1	V2	Outputs			
			DC	DC	On/Off	On/Off
② 2-pipe with electric heater 						
③ 2-pipe with radiator 						
④ 4-pipe 						
⑤ 2-pipe/2-stage 						

Application	V1	V2	V3	V4	Outputs	
					DC	DC
⑥ 4-pipe with electric heater 				-		
⑦ 4-pipe/2-stage 						

Application	V1	V2	Outputs	
			DC ( )	DC (PICV) On/Off
⑧ 4-pipe with 6-port ball valve 		-		
⑩ 4-pipe with 6-port PICV 		-		
⑨ 4-pipe with 6-port ball valve as changeover and PICV 				

IAQ/CO2		DC	3-speed	Limits:
	DC	U1 (*)	U1 (*)	(*)  Appl. ⑦ does not support.
	On/Off	Q3		

	en	de	es	fr	it	tr
①	2-pipe fan coil	2-Rohr Ventilator-konvektor	Fancoil a dos tubos	Ventiloconvecteur 2 tubes	Fan coil 2 tubi	2 borulu fan coil
②	2-pipe with electric heater	2-Rohranwendung & Elektroheizung	2 tubos & batería eléctrica	Application 2 tubes & batterie électrique	Fan coil 2 tubi con batteria elettrica	2 borulu & elk. Isıtıcı
③	2-pipe with radiator	2-Rohranwendung & Radiator	2 tubos & radiador	Application 2 tubes & radiateur	Fan coil 2 tubi e radiatore	2 borulu & radyatör
④	4-pipe fan coil	4-Rohr Ventilator-konvektor	Fancoil a 4 tubos	Ventiloconvecteur 4 tubes	Fan coil 4 tubi	4 borulu fan coil
⑤	2-pipe/2-stage	2-Rohr/2-stufig	2 tubos/2 etapas	2 tubes/2 étages	2-tubi / 2-stadi	2-borulu/2-kademe
⑥	4-pipe with electric heater	4-Rohranwendung & Elektroheizung	4 tubos & batería eléctrica	Application 4 tubes & batterie électrique	Fan coil 4 tubi con batteria elettrica	4 borulu fan coil & elk. Isıtıcı
⑦	4-pipe/2-stage	4-Rohr/2-stufig	4 tubos/2 etapas	4 tubes/2 étages	4-tubi / 2-stadi	4-borulu/2-kademe
⑧	4-pipe with 6-port ball valve	4-Rohr mit 6-Weg-Kugelventil	4 tubos con válvula de bola de 6 vías	4 tubes avec vanne à boisseau sphérique 6 voies	4-tubi con valvola a 6 vie	4-borulu, 6-yollu küresel vana
⑨	4-pipe with 6-port ball valve as changeover and PICV	4-Rohr mit 6-Weg-Kugelventil für Umschaltung und PICV	4 tubos con válvula de bola de 6 vías como cambio y PICV	4 tubes avec vanne à boisseau sphérique 6 voies comme changeover et PICV	4-tubi con valvola a 6 vie per commutazione stagionale e valvola PICV	4-borulu, PICV ve yaz kış geçişi için 6-yollu küresel vana
⑩	4-pipe with 6-port PICV	4-Rohr mit 6-Weg-PICV	4 tuberías con PICV de 6 puertos	4 tubes avec (vanne) PICV 6 voies	4-tubi con valvola a 6 vie PICV	4-Borulu 6-Yollu PICV vana